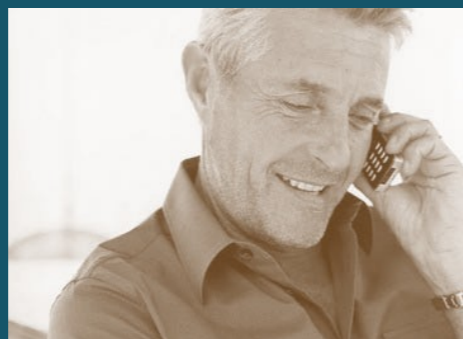


Crystal Meth?  
NEON's got the answers!

- GET INFO
- GET EDUCATED
- LOG-ON
- GET THE POINT
- TALK IT THROUGH



SeattleCounselingService

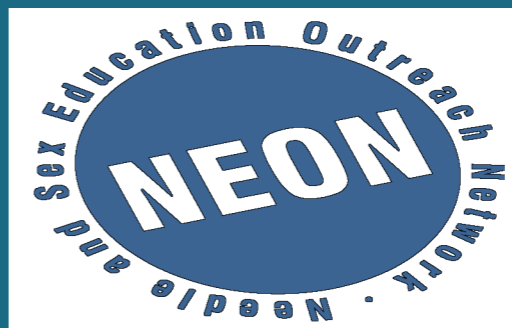
1216 Pine Street, Suite 300  
Seattle, WA 98101  
T 206.323.1768  
F 206.323.2184

[www.seattlecounseling.org](http://www.seattlecounseling.org)  
[www.crystalneon.org](http://www.crystalneon.org)



Project Neon, started in 1993, is a HIV-prevention community-level intervention that targets gay & bi-men who use crystal methamphetamine in the Seattle & King County areas. NEON uses harm reduction and traditional abstinence models through its various programs, such as Peer Educator Groups, Individual Counseling, Group Therapy, Peer-Facilitated Support Groups, Provider Trainings, Social Events, and various Media Materials.

NEON is a program of Seattle Counseling Service in collaboration with Public Health—Seattle & King County.



Project NEON  
206.323.1768  
[www.crystalneon.org](http://www.crystalneon.org)

Questions about  
**CRYSTAL?**



Has Answers!

"Crystal use is associated with a higher risk of getting and transmitting HIV. Men who use crystal have higher rates of unprotected sex with more sexual partners, usually within a network where about one out of five crystal users already have HIV."  
*Deconstructing Tina, 2005*

NEON offers reliable & trustworthy information from people like you! Our Peer Educators & Facilitators - active users, injectors & non-injectors, and recovery peer facilitators help others manage their current use and recovery steps. Peer Educators deliver new condoms, lube & clean injection equipment while Peer Facilitators provide group support to enhance your recovery in addition to individual counseling and group therapy.

Contact the Program Coordinator at  
206.323.1768  
to become a Peer Educator or Facilitator.

Neon is a leader in creating innovative and provocative literature with its world-renowned Amphetamine and various brochures such as "How Crystal Meth Affects The Body" and "Meth & The City." All printed materials are also available online at [www.crystalneon.org](http://www.crystalneon.org) and are easily reproduced for your convenience.

For your personal copies  
contact the Health Educator at  
206.323.1768

NEON values disseminating information about the harms of crystal meth and educating about the various resources for safer use, safer sex and recovery support whenever appropriate. [www.CRYSTALNEON.org](http://www.CRYSTALNEON.org) is the cyber headquarters filled with non-judgmental information and thought-provoking visuals to tweak your fancy!

NOTE: This site is intended for community providers & educators, and adults 18 years and up who currently use &/or contemplating change.

NEON's speed-savvy counselors are always ready to work with you with open ears on sound advice and useful referrals. We offer individualized 1-on-1 counseling and group support that is confidential, non-judgmental and FREE!

Contact NEON Clinical Coordinator  
206.323.1768  
for more information or to sign-up now!

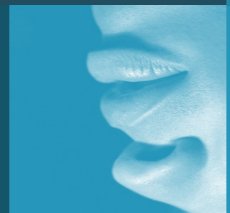
NEON partners with Public Health -Seattle & King County to provide 1-to-1 Needle Exchange at various convenient locations in the city. Peer Educators and Counselors also offer new injection equipment and needle exchange.

For more information on location and times, contact Public Health at  
206.205.7837 (STDS)

Needle Exchange



Peer Educators



Publications

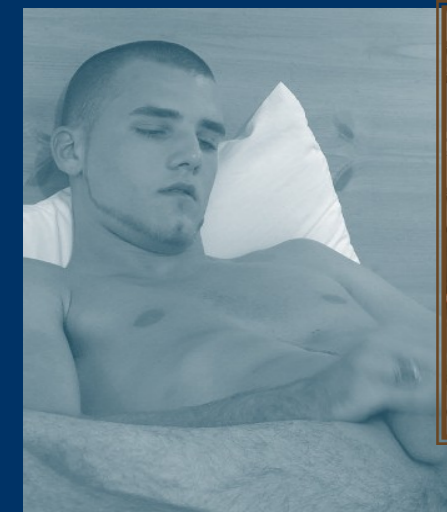


[www.crystalneon.org](http://www.crystalneon.org)

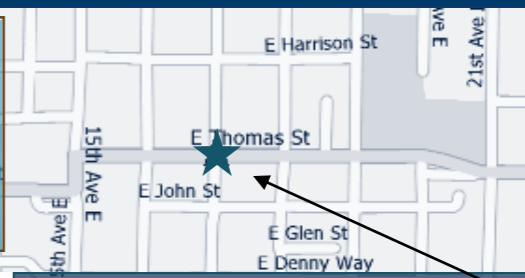


Counseling





**Project NEON at**  
Seattle Counseling Service  
1216 Pine St., Suite 300 \*206.323.1768\*[www.seattlecounseling.org](http://www.seattlecounseling.org)



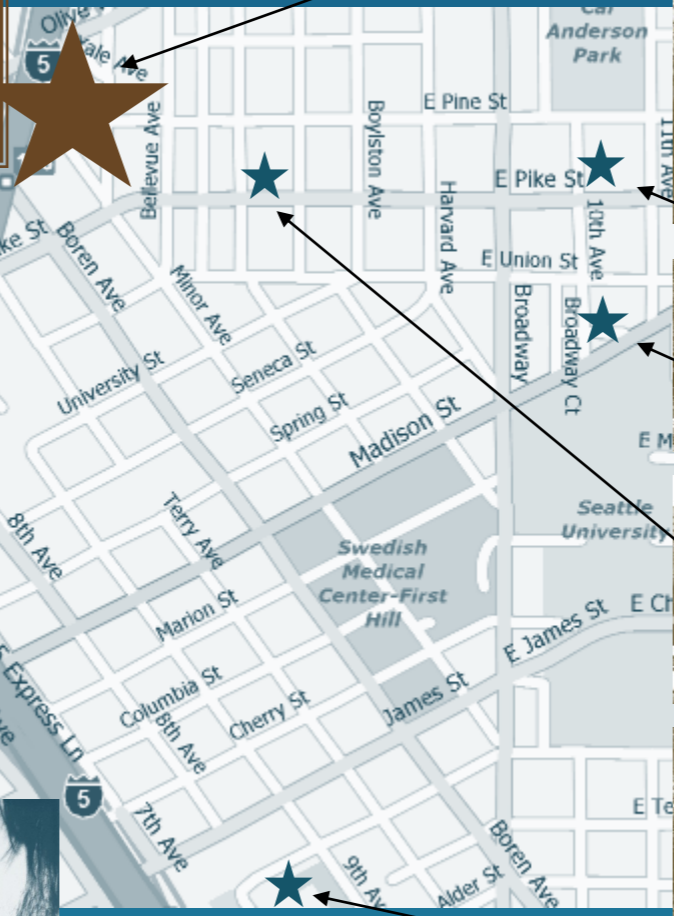
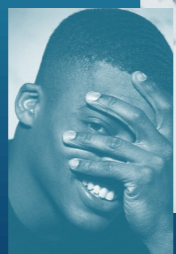
**Dunshee House**  
Confidential, free and facilitated emotional support groups for persons infected or affected by HIV/AIDS.  
303 17th Ave. E \* 206.322.2437 \* [www.dunsheehouse.org](http://www.dunsheehouse.org)

**Anonymous & Confidential HIV/STD Testing.**

Available at these locations:

- Center for LGBT Health/Gay City**  
511 E. Pike
- STD Clinic at Harborview**  
325 9th Ave.
- Basic Plumbing**  
1505 10th Ave.
- Club Seattle**  
1520 Summit Ave.
- Club Z**  
1117 Pike St.

For times and information call 206.205.7837 (STDS)



**Seattle LGBT Community Center**  
Community resources pertinent to the LGBT community.  
1115 East Pike Street \* 206.323.5428 \* [www.seattlelgbt.org](http://www.seattlelgbt.org)

**Lifelong AIDS Alliance**  
Lifelong AIDS Alliance is committed to preventing the spread of HIV, and to providing practical support services and advocating for those whose lives are affected by HIV and AIDS.  
1002 E Seneca St. \* 206.328.8979 \* [www.llaa.org](http://www.llaa.org)

**Gay City Health Project**  
Community based health organization for gay, bisexual and transgender men with free HIV/STD testing, health events, resources and volunteer opportunities.  
511 E Pike St. \* 206.860.6969 \* [www.gaycity.org](http://www.gaycity.org)

**STD Clinic**  
A Public Health clinic located at Harborview Hospital provides HIV testing, STD diagnosis and treatment services.  
Harborview Medical Center:  
325 9th Ave \* 206.205.7837 \* [www.metrokc.gov/health](http://www.metrokc.gov/health)

Released June 2007  
Concept: Arnold T. Martin  
Design: Gear Box Media

