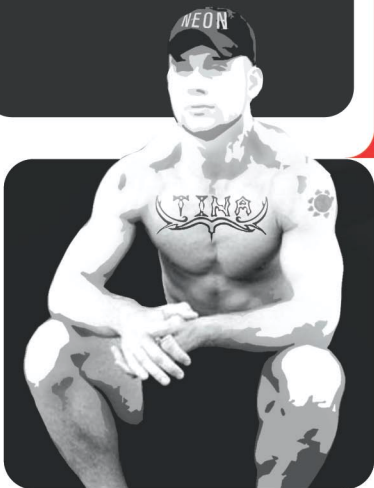


# Questions *about* **crystal?**



**NEON** has answers.

**In King County,  
half of gay and bi  
men who inject  
crystal are HIV+.**

**This is:**

- **3 times higher than other gay/bi men**
- **15 times higher than other drug injectors.**

***You are more likely to get  
HIV, STDs, and hepatitis if:***

- ***you're sharing needles or works***
- ***you're having unprotected sex while high***
- ***your drug use is spinning out of control***

**Project NEON relies on input, contributions, ideas, and creative energy from guys in the crystal community. We are the only program of its kind in Seattle. We've been around since 1993. And we are a model for other gay crystal programs all across the country.**

**Contact us:**

**Project NEON**

**(206) 622-6925**

**[www.crystalneon.org](http://www.crystalneon.org)**

**Seattle Counseling Services**

**Seattle Counseling Services**

**112 Broadway Avenue East  
Seattle, WA 98102**

**(206) 323-1768**

**[www.seattlecounseling.org](http://www.seattlecounseling.org)**



Project NEON is a program of Seattle Counseling Services in collaboration with Public Health - Seattle & King County.

# NEON

## Options for gay & bisexual men who use crystal.

Information. Health advice. A place to talk. No matter what you're looking for, **NEON** has it.

From injection tips to counseling, NEON has more for gay crystal users than anyone else. We're committed to providing judgement-free, health positive resources that support your choice about crystal and sex. We don't encourage you to use or pressure you to quit. You have options.

**Hook-up with NEON  
in a variety of ways:**

### *Get info*

**Ask a NEON peer educator**



Reliable, trustworthy information from people like you. Our peer educators are crystal users who help other crystal users with safer injection info and healthy sex tips. They carry a full supply of condoms, lube, and clean injection equipment. If you want to become a NEON peer or talk with one, call us at **(206) 622-6925**.

## Get educated Read our publications

The latest and best brochures including SCS's legendary **Amphetamine!** Check-out our brochure racks at bathhouses, clubs, and HIV/GLBT agencies.



## Log-on Visit our website

You've never been to a website like this! Fast breaking info and visuals to tweak your fancy.

[www.crystalneon.org](http://www.crystalneon.org)  
(Adults only!)

CRYSTALNEON.ORG

Having awareness and providing options for crystal users is the greatest benefit ever

This website contains information for gay and bisexual men who use methamphetamine. We in no way promote or encourage the use of this controlled substance. Instead, we seek to help individuals minimize the harms associated with use of methamphetamine. Because of our harm reduction goals, some language and imagery may not be suitable for individuals under 18 years of age. Also, if you quit using methamphetamine or are trying to quit, you may wish only to view the section of this website that pertains to managing, cutting down, and quitting.



I understand the purpose of this website, the use of adult language and imagery, and I am over 18 years of age.

Enter  
CRYSTAL NEON



## ***Get the Point*** **Needle Exchange**

We partner with needle exchange sites to exchange new syringes for your used ones. Locations on Capitol Hill and Downtown. NEON peers and counselors also offer safer injection supplies. Call **(206) 205-7837** for exchange times and locations.

## ***Talk it through*** **Personalized Counseling**

NEON's speed savvy counselors are ready to work with you with open ears, advice, and useful referrals. We offer individualized, **one-on-one counseling** that's FREE and confidential. No waiting list. No paperwork.

**The Wednesday Group** - Seattle's infamous weekly crystal group. The place where guys come to talk about crystal, sex and what to do about them. Just drop-in (not 12-step).

We have **other ongoing groups** including recovery groups. Ask a counselor!

For more info or an appointment, call **(206) 323-1768** or stop by Seattle Counseling. Ask for a NEON counselor.





**HIV, STDs, Hepatitis**

Healthier injecting/vein care

**Sex**

Mood swings

**Depression**

Paranoia

**Anger/violence**

Money/housing issues

**Getting a grip**

Cutting down or quitting

(206) 622-6925